

TOAD&CO



Men's Collection  
FALL 2025

# Feel Good Clothes

---

We think people who feel good are happier, have more fun, and are more likely to pay the good vibes forward. Toad&Co clothes are thoughtfully designed to make sure whoever's wearing them feels good every single time - inside and out.



Sustainable Sourcing,  
Materials & Processes



**FOR THE  
PLANET**

Every Purchase  
Gives Back



**JOY BACKED  
GUARANTEE**

Clothes That  
Bring You Joy



TOAD&CO 

**Men's Outerwear**

## M's Spruce Wood Shirt Jacket

T2541301    CONTENT: 57% Polyester, 43% Recycled Polyester or 98% Recycled Polyester, 2% Elastane    SIZES: S-XXL

---

**WHOLESALE:** US\$97.50    **RETAIL:** US\$195.00

**Fit:** Shirt jacket fit, drop tail, 29.5 inch length

**Features:** Water/wind resistant with a PFC-free DWR finish, 220 GSM recycled polyester insulation, snap placket, drop-in chest pocket with snap flap closure, fleece-lined single welt hand pockets



Color: Pasture  
Color Code: 327



Color: Midnight Cord  
Color Code: 907

## M's Nomader Reversible Vest

T2261401    CONTENT: 100% Recycled Nylon    SIZES: S-XXL

---

**WHOLESALE:** US\$72.50    **RETAIL:** US\$145.00

**Fit:** Standard fit, stand collar, elasticated binding at armhole and bottom opening, 27.5 inch length

**Features:** Water/wind resistant with a PFC-free DWR finish, 130 GSM recycled sheet insulation, reversible, front zipper, single welt hand pockets, secure zip chest pocket (reverse side) single welt pockets (reverse side)



Color: Midnight & Deep Sea  
Color Code: 084



Color: Coyote & Washed Black  
Color Code: 756

## M's Nomader Reversible Jacket

T2541401    CONTENT: 100% Recycled Nylon    SIZES: S-XXL

**WHOLESALE:** US\$82.50    **RETAIL:** US\$165.00

**Fit:** Standard fit, stand collar, elasticated binding at sleeve opening, shock cord bottom opening cinch, 28 inch length

**Features:** Water/wind resistant with a PFC-free DWR finish, 130 GSM recycled sheet insulation, reversible, front zipper, single welt hand pockets, secure zip chest pocket (reverse side) single welt pockets (reverse side)



Color: Midnight & Deep Sea  
Color Code: 084

Color: Coyote & Washed Black  
Color Code: 756

## M's Balsam Trucker Jacket

T2000012    CONTENT: 98% Organic Cotton, 2% Elastane    SIZES: S-XXL

**WHOLESALE:** US\$95.00    **RETAIL:** US\$190.00    **New**

**Fit:** Standard fit, two piece sleeve, bi-swing for added mobility, 25 inch length

**Features:** Flannel lined, cord collar, drop-in chest pocket, two piece taffeta lined sleeves, welt pockets, adjustable cuffs with cord lining



Color: Fir  
Color Code: 317

Color: Washed Black  
Color Code: 938

TOAD&CO   
**Men's Pants**

## M's Balsam 5 Pkt Lean Pant

T2442401    CONTENT: 98% Organic Cotton, 2% Elastane    SIZES: 30-38

---

**WHOLESALE:** US\$55.00    **RETAIL:** US\$110.00

**Fit:** Lean fit, FlexForm waistband for comfort, 5 pocket styling, offered in 30 inch & 32 inch inseam, 7.5 inch bottom opening

**Features:** Shank button closure with zip fly



Color: Midnight  
Color Code: 453



Color: Honey Brown  
Color Code: 201



Color: Fir  
Color Code: 317



Color: Washed Black  
Color Code: 938

## M's Balsam 5 Pkt Pant

T2441402    CONTENT: 98% Organic Cotton, 2% Elastane    SIZES: 30-38

---

**WHOLESALE:** US\$55.00    **RETAIL:** US\$110.00

**Fit:** Standard fit, FlexForm waistband for comfort, 5 pocket styling, offered in 30 inch & 32 inch inseam, 8.5 inch bottom opening

**Features:** Shank button closure with zip fly



Color: Midnight  
Color Code: 453



Color: Honey Brown  
Color Code: 201



Color: Fir  
Color Code: 317



Color: Washed Black  
Color Code: 938

## Mission Ridge Lean Pant

T2442807    CONTENT: 77% Organic Cotton, 21% Polyester, 2% Elastane    SIZES: 30-38

---

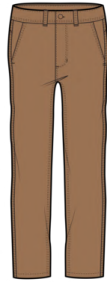
**WHOLESALE:** US\$45.00    **RETAIL:** US\$90.00

**Fit:** Lean fit, fixed waist, chino styling, offered in 30 inch and 32 inch inseams, 7.5 inch bottom opening

**Features:** Button closure with zip fly, button-through single welt back pockets



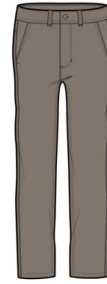
Color: Iron Vintage Wash  
Color Code: 041



Color: Tabac Vintage Wash  
Color Code: 247



Color: Silver Pine Vintage Wash  
Color Code: 321



Color: Dark Chino  
Color Code: 813

## Mission Ridge Pant

T2441411    CONTENT: 77% Organic Cotton, 21% Polyester, 2% Elastane    SIZES: 30-38

---

**WHOLESALE:** US\$45.00    **RETAIL:** US\$90.00

**Fit:** Standard fit, fixed waist, chino styling, offered in 30 inch and 32 inch inseams, 8.5 inch bottom opening

**Features:** Button closure with zip fly, button-through single welt back pockets



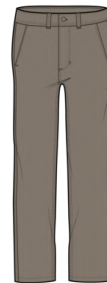
Color: Iron Vintage Wash  
Color Code: 041



Color: Barnwood Vintage Wash  
Color Code: 214



Color: Tabac Vintage Wash  
Color Code: 247



Color: Dark Chino  
Color Code: 813



## Mission Ridge 5 Pocket Lean Pant

T2442906    CONTENT: 77% Organic Cotton, 21% Polyester, 2% Elastane    SIZES: 30-38

---

**WHOLESALE:** US\$45.00    **RETAIL:** US\$90.00

**Fit:** Lean fit, fixed waist, 5 pocket styling, offered in 30 inch and 32 inch inseams, 7.5 inch bottom opening

**Features:** Button closure with zip fly



Color: Iron Vintage Wash  
Color Code: 041



Color: Barnwood Vintage Wash  
Color Code: 214



Color: Tabac Vintage Wash  
Color Code: 247



Color: Silver Pine Vintage Wash  
Color Code: 321



Color: Dark Chino  
Color Code: 813

## M's Coaster Cord 5 Pkt Lean Pant

T2441901    CONTENT: 69% Organic Cotton, 28% Polyester, 3% Elastane    SIZES: 30-38

---

**WHOLESALE:** US\$49.00    **RETAIL:** US\$98.00

**Fit:** Lean fit, fixed waist, 5 pocket styling, 7.5 inch bottom opening, offered in 30 inch and 32 inch inseams

**Features:** Button closure with zip fly



Color: Soot  
Color Code: 089



Color: Honey Brown  
Color Code: 201



Color: Fir  
Color Code: 317



Color: Epidote  
Color Code: 319

TOAD&CO   
**Men's Shirts**

# M's Airscape LS Shirt

T2000009    CONTENT: 100% Organic Cotton    SIZES: S-XXL

WHOLESALE: US\$42.50    RETAIL: US\$85.00

New

Fit: Standard fit, shirt tail, 29.5 inch length

Features: Button down collar, button-through drop-in chest pocket, adjustable cuffs



Color: North Shore Check  
Color Code: 087



Color: Port Madras  
Color Code: 189



Color: Laurel Plaid  
Color Code: 744



Color: Midnight Dobby  
Color Code: 954

# Airsmyth LS Shirt

T2241915    CONTENT: 60% Recycled Cotton, 40% Recycled Polyester    SIZES: S-XXL

**WHOLESALE:** US\$39.00    **RETAIL:** US\$78.00

**Fit:** Standard fit, shirt tail, 29.5 inch length

**Features:** Button down collar, button-through drop-in chest pocket, adjustable cuffs



Color: Chestnut Tartan  
Color Code: 170



Color: Chive Plaid  
Color Code: 172



Color: Black Two Color  
Plaid  
Color Code: 173



Color: Pasture Mini Check  
Color Code: 174



Color: Chai  
Color Code: 215



Color: Partridge Two Color  
Plaid  
Color Code: 862



Color: Gold Multi Plaid  
Color Code: 863



Color: Campfire  
Windowpane  
Color Code: 866



Color: Dark Roast Tonal  
Madras  
Color Code: 870

## M's Arroyo Twill LS Shirt

T2241404    CONTENT: 100% Organic Cotton    SIZES: S-XXL

**WHOLESALE:** US\$44.00    **RETAIL:** US\$88.00

**Fit:** Standard fit, shirt tail, 29.5 inch length

**Features:** Button down collar, button-through drop-in chest pocket with pen holder detail, adjustable cuffs, UPF 75+



Color: Skyway  
Color Code: 440



Color: Yucca  
Color Code: 375

## M's Cascadia LS Shirt

T2000015    CONTENT: 55% Hemp, 45% Organic Cotton    SIZES: S-XXL

**WHOLESALE:** US\$49.00    **RETAIL:** US\$98.00

New

**Fit:** Standard fit, shirt tail, 29.5 inch length

**Features:** Button down collar, button-through drop-in chest pocket, adjustable cuffs



Color: Honey Brown  
Color Code: 201



Color: Pasture  
Color Code: 327



Color: Midnight Geo Print  
Color Code: 444



Color: Green Moss Leaf  
Print  
Color Code: 965

## M's Pinevale LS Shirt

T2000045    CONTENT: 100% Organic Cotton    SIZES: S-XXL

WHOLESALE: US\$45.00    RETAIL: US\$90.00

New

Fit: Standard fit, shirt tail, 29.5 inch length

Features: Two drop-in chest pockets, adjustable cuffs



Color: Chai Trout Print  
Color Code: 192



Color: Carob  
Color Code: 235



Color: Kyanite  
Color Code: 421



Color: Sundown  
Color Code: 624

## Creekwater LS Shirt

T2241108    CONTENT: 100% Organic Cotton    SIZES: S-XXL

WHOLESALE: US\$42.50    RETAIL: US\$85.00

Fit: Standard fit, shirt tail, 29.5 inch length

Features: Two button-through chest pockets with flaps, adjustable cuffs



Color: Tabac  
Color Code: 247



Color: Ink Pinecone Print  
Color Code: 730



Color: Coyote  
Color Code: 811

## M's Shadowbrook LS Shirt

T2000002    CONTENT: 60% Organic Cotton, 40% Recycled Polyester    SIZES: S-XXL

WHOLESALE: US\$62.50    RETAIL: US\$125.00

New

Fit: Standard fit, shirt tail, 29.5 inch length

Features: Knit jacquard, button-through drop-in chest pocket, adjustable cuffs



Color: Kyanite  
Color Code: 421



Color: Camel Twill  
Color Code: 768



Color: Manzanita  
Color Code: 910

## Ranchero LS Shirt

T2241907    CONTENT: 60% Recycled Cotton, 40% Recycled Polyester    SIZES: S-XXL

WHOLESALE: US\$50.00    RETAIL: US\$100.00

Fit: Standard fit, shirt tail, 29.5 inch length

Features: Two button-through chest pockets with flaps, elbow patches, adjustable cuffs



Color: Smoke  
Color Code: 259



Color: Kyanite  
Color Code: 421



Color: Burnt Henna  
Color Code: 615



Color: Cinnamon  
Color Code: 646



Color: Chestnut II  
Color Code: 875

## M's Rockland LS Shirt

T2000016    CONTENT: 100% Organic Cotton    SIZES: S-XXL

WHOLESALE: US\$62.50    RETAIL: US\$125.00

New

Fit: Standard fit, shirt tail, 29.5 inch length

Features: Two button-through drop-in chest pockets, adjustable cuffs



Color: Atlantic  
Color Code: 411



Color: Manzanita  
Color Code: 910

## Mojac III Shirt Jacket

T2241304    CONTENT: 80% Recycled Cotton, 20% Recycled Polyester    SIZES: S-XXL

WHOLESALE: US\$75.00    RETAIL: US\$150.00

Fit: Shirt jacket fit, 29.5 inch length

Features: Snap placket, two chest pockets with flaps, on-seam hand pockets, adjustable cuffs, jersey knit lining



Color: Deep Mahogany  
Color Code: 208



Color: Barley  
Color Code: 257



Color: Midnight  
Color Code: 453



Color: Honey Brown  
Houndstooth  
Color Code: 861



# M's Pinevale Shirt Jacket

T2000001    CONTENT: 100% Organic Cotton    SIZES: S-XXL

---

**WHOLESALE:** US\$70.00    **RETAIL:** US\$140.00

New

**Fit:** Shirt jacket fit, 29.5 inch length

**Features:** 100 GSM recycled polyester insulation, quilted interior, two button-through chest pockets with flaps, taffeta-lined on-seam hand pockets, adjustable cuffs



Color: Midnight  
Color Code: 453

TOAD&CO 

**Men's Tops and Tees**

## M's Primo SS Crew

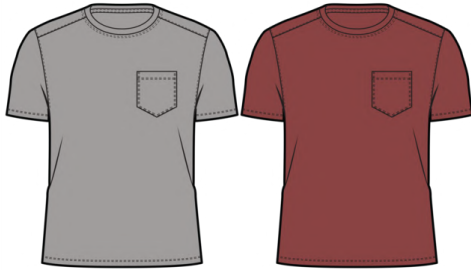
T2001901    CONTENT: 100% Organic Cotton in Conversion    SIZES: S-XXL

---

**WHOLESALE:** US\$22.50    **RETAIL:** US\$45.00

**Fit:** Basic tee fit, crew neck, 28 inch length

**Features:** Rib neck trim, drop-in chest pocket



Color: Basalt  
Color Code: 060

Color: Sundown  
Color Code: 624

## M's Primo Jacquard SS Crew

T2000042    CONTENT: 100% Organic Cotton in Conversion    SIZES: S-XXL

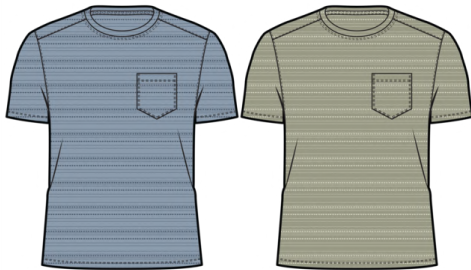
---

**WHOLESALE:** US\$25.00    **RETAIL:** US\$50.00

New

**Fit:** Basic tee fit, crew neck, 28 inch length

**Features:** Rib neck trim, drop-in chest pocket



Color: Weathered Blue  
Jacquard  
Color Code: 533

Color: Yucca Jacquard  
Color Code: 738

## M's Primo LS Henley

T2241909    CONTENT: 100% Organic Cotton in Conversion    SIZES: S-XXL

**WHOLESALE:** US\$27.50    **RETAIL:** US\$55.00

**Fit:** Basic tee fit, henley, 28 inch length

**Features:** Rib neck trim, woven henley placket, side vents



Color: Basalt  
Color Code: 060



Color: Soot  
Color Code: 089



Color: Jasper  
Color Code: 380



Color: Deep Sea  
Color Code: 562



Color: Sundown  
Color Code: 624

## M's Primo Jacquard LS Henley

T2000043    CONTENT: 100% Organic Cotton in Conversion    SIZES: S-XXL

**WHOLESALE:** US\$30.00    **RETAIL:** US\$60.00

New

**Fit:** Basic tee fit, henley, 28 inch length

**Features:** Rib neck trim, woven henley placket, side vents



Color: Weathered Blue  
Jacquard  
Color Code: 533



Color: Yucca Jacquard  
Color Code: 738

## M's Nord Reversible LS Henley

T2241400    CONTENT: 60% Organic Cotton, 40% Recycled Polyester    SIZES: S-XXL

---

**WHOLESALE:** US\$40.00    **RETAIL:** US\$80.00

**Fit:** Standard fit, henley, 28 inch length

**Features:** Reversible, rib collar and cuffs, ring snap woven henley placket



Color: Salt  
Color Code: 199

Color: Yucca  
Color Code: 375

## Framer II LS Crew

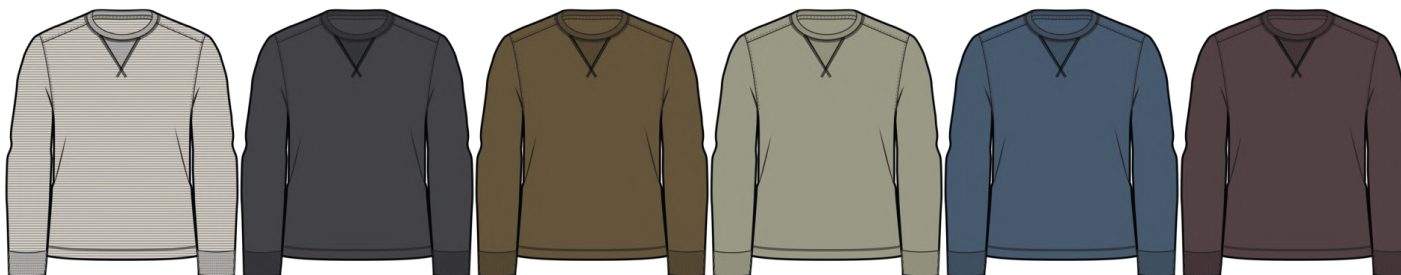
T2241200    CONTENT: 60% Recycled Cotton, 40% Recycled Polyester    SIZES: S-XXL

---

**WHOLESALE:** US\$30.00    **RETAIL:** US\$60.00

**Fit:** Standard fit, crew neck, 27.5 inch length

**Features:** Rib collar, cuffs and heritage v stitch at center front neck, UPF 50+



Color: Heather Grey Stripe  
Color Code: 065

Color: Soot  
Color Code: 089

Color: Fir  
Color Code: 317

Color: Yucca  
Color Code: 375

Color: Pacific Blue  
Color Code: 470

Color: Raisin  
Color Code: 506

# Framer II LS Hoodie

T2242200    CONTENT: 60% Recycled Cotton, 40% Recycled Polyester    SIZES: S-XXL

---

**WHOLESALE:** US\$40.00    **RETAIL:** US\$80.00

**Fit:** Standard fit, 3-piece hood with drawcord, 27.5 inch length

**Features:** Rib cuffs, side vents, UPF 50+



**Color:** Heather Grey Stripe  
**Color Code:** 065



**Color:** Raisin  
**Color Code:** 506



**Color:** Pacific Blue  
**Color Code:** 470

TOAD&CO 

**Men's Sweaters  
and Layers**

## M's Bitterroot LS Henley

T2241406    CONTENT: 98% Recycled Polyester, 2% Elastane    SIZES: S-XXL

**WHOLESALE:** US\$45.00    **RETAIL:** US\$90.00

**Fit:** Relaxed fit, henley, raglan sleeve, 27.5 inch length

**Features:** Button henley placket, rib neck, cuffs, and hem



Color: Honey Brown  
Color Code: 201



Color: Olive  
Color Code: 334



Color: Midnight  
Color Code: 453



Color: Raisin  
Color Code: 506

## M's Bitterroot LS Shirt Jacket

T2000006    CONTENT: 98% Recycled Polyester, 2% Elastane    SIZES: S-XXL

**WHOLESALE:** US\$62.50    **RETAIL:** US\$125.00

New

**Fit:** Shirt jacket fit, 29 inch length

**Features:** Two drop-in chest pockets, welt pockets, adjustable cuffs



Color: Soot  
Color Code: 089



Color: Honey Brown  
Color Code: 201



## M's Bitterroot LS Hoodie

T2081402    CONTENT: 98% Recycled Polyester, 2% Elastane    SIZES: S-XXL

---

**WHOLESALE:** US\$50.00    **RETAIL:** US\$100.00

**Fit:** Standard fit, raglan sleeve, 27.5 inch length

**Features:** Rib cuffs and hem, hood with drawcord



Color: Olive  
Color Code: 334



Color: Midnight  
Color Code: 453



Color: Raisin  
Color Code: 506

## Kennicott Crew

T2081100    CONTENT: 33% Recycled Polyester, 29% Recycled Wool, 18% Recycled Cotton, 10% Recycled Nylon, 7% Polyester, 3% Recycled Other  
Fibers

---

SIZES: S-  
XXL

**WHOLESALE:** US\$55.00    **RETAIL:** US\$110.00

**Fit:** Standard fit, crew neck, 28 inch length

**Features:** Inherent odor control, rib collar, cuffs, and hem



Color: Heather Grey Twill  
Color Code: 033



Color: Big Sky  
Color Code: 485



Color: Cabin  
Color Code: 981

## Kennicott Shirt Jacket

T2621706    CONTENT: 33% Recycled Polyester, 29% Recycled Wool, 18% Recycled Cotton, 10% Recycled Nylon, 7% Polyester, 3% Recycled Other Fibers

SIZES: S-XXL

**WHOLESALE:** US\$72.50    **RETAIL:** US\$145.00

**Fit:** Shirt jacket fit, 29 inch length

**Features:** Inherent odor control, snap placket, two drop-in chest pockets with snap closure, elbow patches, adjustable cuffs



Color: Heather Grey Twill  
Color Code: 033



Color: Honey Brown  
Color Code: 201



Color: Big Sky  
Color Code: 485



Color: Cabin  
Color Code: 981

## Kennicott Shirt Jacket Pattern

T2000017    CONTENT: 39% Recycled Cotton, 31% Recycled Wool, 14% Polyester, 11% Recycled Nylon, 5% Recycled Other Fibers

SIZES: S-XXL

**WHOLESALE:** US\$77.50    **RETAIL:** US\$155.00

New

**Fit:** Shirt jacket fit, 29 inch length

**Features:** Inherent odor control, snap placket, two drop-in chest pockets with snap closure, elbow patches, adjustable cuffs



Color: Black Plaid  
Color Code: 012

## Butte Crew Sweater

T2231202    CONTENT: 60% Recycled Cotton, 40% Recycled Polyester    SIZES: S-XXL

---

**WHOLESALE:** US\$60.00    **RETAIL:** US\$120.00

**Fit:** Relaxed fit, crew neck, 26.5 inch length

**Features:** Shaker stitch, rib collar, cuffs, and hem



Color: True Navy  
Color Code: 414

Color: Sundown  
Color Code: 624

Color: Teak  
Color Code: 777

## M's Alpineglo Sweater

T2000011    CONTENT: 50% Merino Wool, 50% Organic Cotton    SIZES: S-XXL

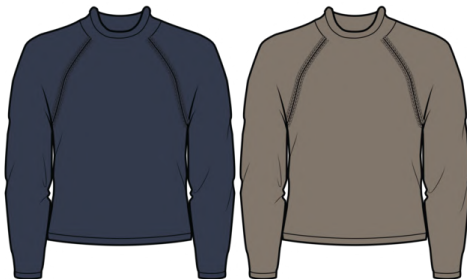
---

**WHOLESALE:** US\$75.00    **RETAIL:** US\$150.00

New

**Fit:** Standard fit, roll neck, raglan sleeve, 25 inch length

**Features:** Knitted with wool yarn on the exterior and cotton yarn on the interior, jersey stitch, rolled neck



Color: True Navy  
Color Code: 414

Color: Dark Chino  
Color Code: 813

# M's Wasatch Sweater

T2000005    CONTENT: 37% Wool Non-Mulesed, 36% Organic Cotton, 26% Recycled Nylon, 1% Elastane    SIZES: S-XXL

**WHOLESALE:** US\$75.00    **RETAIL:** US\$150.00

New

**Fit:** Standard fit, crew neck, 26 inch length

**Features:** Jersey stitch, rib neck, cuffs, and hem



Color: Chestnut Chest  
Stripe  
Color Code: 105



Color: Chive  
Color Code: 348



Color: Ink  
Color Code: 394

TOAD&CO



Women's Collection  
FALL 2025

# Feel Good Clothes

---

We think people who feel good are happier, have more fun, and are more likely to pay the good vibes forward. Toad&Co clothes are thoughtfully designed to make sure whoever's wearing them feels good every single time - inside and out.



Sustainable Sourcing,  
Materials & Processes



**FOR THE  
PLANET**

Every Purchase  
Gives Back



**JOY BACKED  
GUARANTEE**

Clothes That  
Bring You Joy



TOAD&CO 

# Women's Outerwear

## W's Spruce Wood Vest

T1261401    CONTENT: 57% Polyester, 43% Recycled Polyester    SIZES: XS-XL

---

**WHOLESALE:** US\$99.00    **RETAIL:** US\$198.00

**Fit:** Standard fit, stand collar, drop tail, 22 inch length

**Features:** Water/wind resistant with a PFC-free DWR finish, 550 GSM recycled polyester insulation, snap placket with zipper closure, fleece-lined patch pockets with snap flap closure and a side entry



Color: Chestnut Floral Print  
Color Code: 242



Color: Pasture  
Color Code: 327

## W's Spruce Wood Raglan Jacket

T1000060    CONTENT: 57% Polyester, 43% Recycled Polyester or 98% Recycled Polyester, 2% Elastane    SIZES: XS-XL

---

**WHOLESALE:** US\$82.50    **RETAIL:** US\$165.00    **New**

**Fit:** Standard fit, 3-piece hood with drawcord, raglan sleeves, drawcord at bottom opening, 23.5 inch length

**Features:** Water/wind resistant with a PFC-free DWR finish, 40 GSM recycled polyester insulation, polyester lining, snap placket with zipper closure, secure zip pocket, patch pockets, adjustable cuffs



Color: Chestnut Floral Print  
Color Code: 242



Color: Midnight Cord  
Color Code: 907



## W's Nomader Reversible Jacket

T1541401    CONTENT: 100% Recycled Nylon    SIZES: XS-XL

**WHOLESALE:** US\$75.00    **RETAIL:** US\$150.00

**Fit:** Boxy fit, drop shoulder, elasticated binding at sleeve opening, drop tail, 22.5 inch length

**Features:** Water/wind resistant with a PFC-free DWR finish, 130 GSM recycled sheet insulation, reversible, snap front, topped-on sleeve detail, patch pockets with snap flap closure and side entry, single welt pockets (reverse side)



Color: Midnight & Deep Sea  
Color Code: 084

Color: Dusty Cedar & Raisin  
Color Code: 575

Color: Coyote & Artichoke  
Color Code: 878

## W's Nomader Reversible Parka

T1541400    CONTENT: 100% Recycled Nylon    SIZES: XS-XL

**WHOLESALE:** US\$90.00    **RETAIL:** US\$180.00

**Fit:** Standard fit, drop shoulder, elasticated binding at sleeve opening, shock cord waist cinch, drop tail, 32.5 inch length

**Features:** Water/wind resistant with a PFC-free DWR finish, 130 GSM recycled sheet insulation, reversible, 3-piece hood with encased elastic binding, front zipper, topped-on sleeve detail, single welt hand pockets, secure zip chest pocket (reverse side) single welt pockets (reverse side)



Color: Raisin & Midnight  
Color Code: 573

Color: Deep Sea & Coyote  
Color Code: 879

## W's Balsam Barn Jacket

T1000034    CONTENT: 98% Organic Cotton, 2% Elastane    SIZES: XS-XL

WHOLESALE: US\$90.00    RETAIL: US\$180.00

New

Fit: Oversized fit, two piece sleeve, 27.5 inch length

Features: Flannel lined, cord collar, drop-in chest pocket with pen holder detail, two piece taffeta lined sleeves, hand pocket with topped on pocket with button-through flaps, adjustable cuffs with cord lining



Color: Honey Brown  
Color Code: 201



Color: Fig  
Color Code: 508

## Manzana Quilted Jacket

T1000032    CONTENT: 100% Organic Cotton    SIZES: XS-XL

WHOLESALE: US\$75.00    RETAIL: US\$150.00

New

Fit: Oversized fit, stand collar, drop shoulder, 24.5 inch length

Features: 130 GSM recycled polyester insulation, quilted, button front, patch pockets



Color: Pasture Floral Print  
Color Code: 169



Color: Partridge Gingham  
Color Code: 190



Color: Soot Graphic Print  
Color Code: 860

TOAD&CO 

# Women's Bottoms

## W's Balsam Cutoff Pant

T1442302    CONTENT: 98% Organic Cotton, 2% Elastane    SIZES: 0-18

**WHOLESALE:** US\$55.00    **RETAIL:** US\$110.00

**Fit:** Kick flare fit, FlexForm waistband for comfort, high rise, 5 pocket styling, ankle length, 27.5 inch inseam, 9.5 inch bottom opening

**Features:** Shank button closure with zip fly, raw hem



Color: Green Olive Leaf  
Print  
Color Code: 388



Color: Midnight Stripe  
Color Code: 413



Color: Pacific Blue  
Color Code: 470



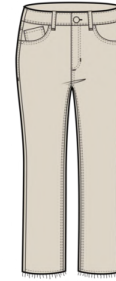
Color: Fig  
Color Code: 508



Color: Honey Brown  
Color Code: 201



Color: Natural II  
Color Code: 286



Color: Washed Black  
Color Code: 938

## W's Balsam Wide Leg Pant

T1000046    CONTENT: 98% Organic Cotton, 2% Elastane    SIZES: 0-18

**WHOLESALE:** US\$57.50    **RETAIL:** US\$115.00

**Fit:** Wide leg fit, FlexForm waistband for comfort, high rise, 5 pocket styling, standard length, 30.5 inch inseam, 11.5 inch bottom opening

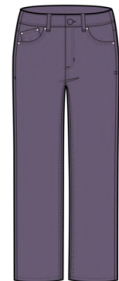
**Features:** Shank button closure with zip fly



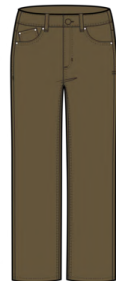
Color: Midnight Stripe  
Color Code: 413



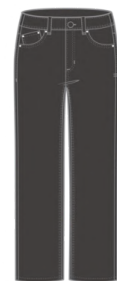
Color: Fig  
Color Code: 508



Color: Fir  
Color Code: 317



Color: Washed Black  
Color Code: 938



## W's Balsam Wide Leg Utility Pant

T1442513    CONTENT: 98% Organic Cotton, 2% Elastane    SIZES: 0-18

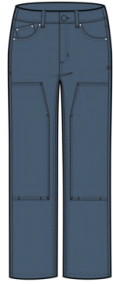
**WHOLESALE:** US\$62.50    **RETAIL:** US\$125.00

**Fit:** Wide leg fit, FlexForm waistband for comfort, high rise, 5 pocket styling, standard length, 30.5 inch inseam, 11.5 inch bottom opening

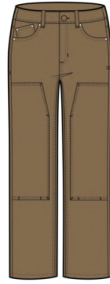
**Features:** Shank button closure with zip fly, double layer knee, utility pocket



Color: Green Olive Leaf  
Print  
Color Code: 388



Color: Pacific Blue  
Color Code: 470



Color: Honey Brown  
Color Code: 201

## Earthworks 5 Pocket Skinny Pant

T1441007    CONTENT: 68% Organic Cotton, 30% TENCEL™ Lyocell, 2% Elastane    SIZES: 0-18

**WHOLESALE:** US\$45.00    **RETAIL:** US\$90.00

**Fit:** Skinny fit, FlexForm waistband for comfort, mid rise, 5 pocket styling, standard length, 30 inch inseam, 4.75 inch bottom opening

**Features:** Shank button closure with zip fly



Color: Epidote  
Color Code: 319



Color: Raisin  
Color Code: 506



Color: Coyote  
Color Code: 811

## Earthworks Pant

T1441816    CONTENT: 68% Organic Cotton, 30% TENCEL™ Lyocell, 2% Elastane    SIZES: 0-18

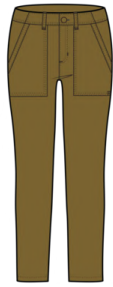
**WHOLESALE:** US\$44.00    **RETAIL:** US\$88.00

**Fit:** Straight fit, FlexForm waistband for comfort, mid rise, standard length, 31 inch inseam, 7.25 inch bottom opening

**Features:** Shank button closure with zip fly, front and back patch pockets



Color: Raisin  
Color Code: 506



Color: Coyote  
Color Code: 811



Color: Epidote  
Color Code: 319



Color: Soot  
Color Code: 089



Color: Midnight  
Color Code: 453

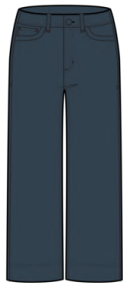
## Earthworks Wide Leg Pant

T1442907    CONTENT: 68% Organic Cotton, 30% TENCEL™ Lyocell, 2% Elastane    SIZES: 0-18

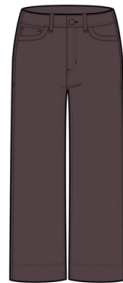
**WHOLESALE:** US\$47.50    **RETAIL:** US\$95.00

**Fit:** Wide leg crop fit, FlexForm waistband for comfort, mid rise, 5 pocket styling, 26 inch inseam, 9.5 inch bottom opening

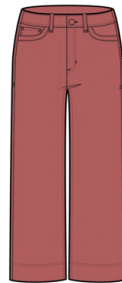
**Features:** Shank button closure with zip fly



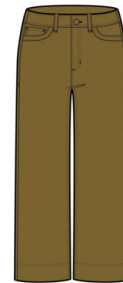
Color: Midnight  
Color Code: 453



Color: Raisin  
Color Code: 506



Color: Dusty Cedar  
Color Code: 665



Color: Coyote  
Color Code: 811



Color: Epidote  
Color Code: 319



Color: Soot  
Color Code: 089

## W's Juniper Utility Pant

T1441301    CONTENT: 98% Organic Cotton, 2% Elastane    SIZES: 0-18

---

**WHOLESALE:** US\$57.50    **RETAIL:** US\$115.00

**Fit:** Straight fit, FlexForm waistband for comfort, high rise, standard length, 7.75 inch bottom opening, 27.5 inch inseam

**Features:** Shank button closure and fly, slash hand pockets, double layer knee, back patch pockets



Color: Laurel  
Color Code: 728



Color: Chestnut Embroidery  
Color Code: 876

## W's Linden Overall

T1000022    CONTENT: 98% Organic Cotton, 2% Elastane    SIZES: XS-XL

---

**WHOLESALE:** US\$75.00    **RETAIL:** US\$150.00    **New**

**Fit:** Wide leg fit, adjustable straps, ankle length, 8 inch bottom opening, 27 inch inseam

**Features:** Drop-in chest pocket with button-through flap, slash pockets, back patch pockets



Color: Beetle  
Color Code: 365



Color: Iris  
Color Code: 591

## W's Linden Canvas Pant

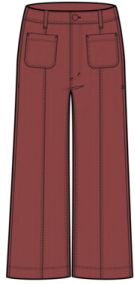
T1442500    CONTENT: 98% Organic Cotton, 2% Elastane    SIZES: 0-18

---

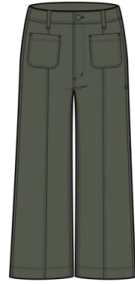
**WHOLESALE:** US\$49.00    **RETAIL:** US\$98.00

**Fit:** Wide leg fit, FlexForm waistband for comfort, high rise, ankle length, 11 inch bottom opening, 28 inch length

**Features:** Shank button closure with zip fly, front and back patch pockets



Color: Sundown  
Color Code: 624



Color: Beetle  
Color Code: 365



Color: Iris  
Color Code: 591

## Bramble Lined Overall

T1441201    CONTENT: 97% Organic Cotton, 3% Elastane    SIZES: XS-XL

---

**WHOLESALE:** US\$80.00    **RETAIL:** US\$160.00

**Fit:** Straight fit, adjustable straps, cuffed hem, standard length, 7.5 inch bottom opening, 29 inch length

**Features:** Drop-in chest pocket, back patch pocket, printed jersey knit lining



Color: Coyote  
Color Code: 811



## W's Coaster Cord Pant

T1000057    CONTENT: 69% Organic Cotton, 28% Polyester, 3% Elastane    SIZES: 0-18

WHOLESALE: US\$47.50    RETAIL: US\$95.00    **New**

Fit: Straight fit, FlexForm waistband for comfort, mid rise, 5 pocket styling, 7.25 inch bottom opening, 31 inch inseam

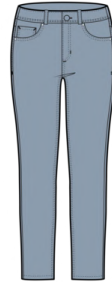
Features: Shank button closure with zip fly



Color: Soot  
Color Code: 089



Color: Honey Brown  
Color Code: 201



Color: Weathered Blue  
Color Code: 481

## W's Coaster Cord Wide Leg Pant

T1000056    CONTENT: 69% Organic Cotton, 28% Polyester, 3% Elastane    SIZES: 0-14

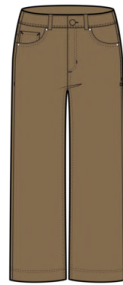
WHOLESALE: US\$50.00    RETAIL: US\$100.00    **New**

Fit: Wide leg crop fit, FlexForm waistband for comfort, mid rise, 5 pocket styling, 9.75 inch bottom opening, 26 inch inseam

Features: Shank button closure with zip fly



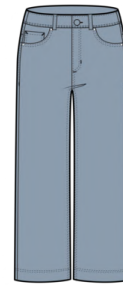
Color: Soot  
Color Code: 089



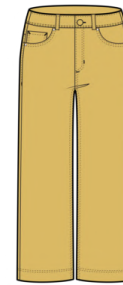
Color: Honey Brown  
Color Code: 201



Color: Epidote  
Color Code: 319



Color: Weathered Blue  
Color Code: 481



Color: Chamomile  
Color Code: 770

## W's Cascadia Pull-On Pant

T1000012    CONTENT: 55% Hemp, 45% Organic Cotton    SIZES: XS-XL

**WHOLESALE:** US\$47.50    **RETAIL:** US\$95.00    **New**

**Fit:** Wide leg crop fit, encased elastic waistband with drawcord, high rise, 10 inch bottom opening, 23 inch inseam

**Features:** Slash pockets, pleated front, drop-in back pocket



Color: Honey Brown  
Color Code: 201



Color: Raisin  
Color Code: 506



Color: Laurel  
Color Code: 728

## Tarn Pull-On Pant

T1000031    CONTENT: 54% Hemp, 44% TENCEL™ Lyocell, 2% Elastane    SIZES: XS-XL

**WHOLESALE:** US\$47.50    **RETAIL:** US\$95.00    **New**

**Fit:** Wide leg crop fit, encased elastic waistband with drawcord, high rise, 10.25 inch bottom opening, 23 inch inseam

**Features:** Slash pockets, pleated front, drop-in back pocket



Color: Acai Gingham  
Color Code: 584



Color: Navy Railroad Stripe  
Color Code: 947

# W's Rover Wide Leg Pant

T1442512    CONTENT: 51% Nylon, 45% Recycled Nylon, 4% Elastane    SIZES: 0-18

---

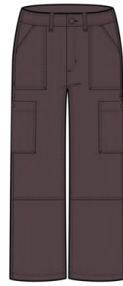
**WHOLESALE:** US\$49.00    **RETAIL:** US\$98.00

**Fit:** Can be worn as a wide leg crop or cinched in at leg opening for a jogger fit, FlexForm waistband for comfort, high rise, 10 inch bottom opening, 28.5 inch inseam

**Features:** PFC-free DWR finish, shank button closure with zip fly, front and back patch pockets, cargo pockets with snap closure



Color: Jeep  
Color Code: 358



Color: Raisin  
Color Code: 506

# Chaka Wide Leg Pant

T1441011    CONTENT: 48% Organic Cotton in Conversion, 48% TENCEL™ Lyocell, 4% Elastane or 39% Recycled Polyester, 34% Organic Cotton, 21% TENCEL™ Lyocell, 6% Elastane

SIZES: XS-  
XL

**WHOLESALE:** US\$39.00    **RETAIL:** US\$78.00

**Fit:** Wide leg crop fit, ruched elastic waistband, mid rise, 25 inch inseam

**Features:** Inherent odor control, hidden stash pocket in waistband on wearer's right



Color: Black Pansy Print  
Color Code: 010



Color: True Navy Retro Print  
Color Code: 166



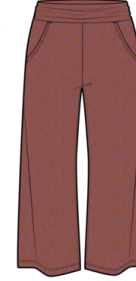
Color: Midnight Star Geo  
Print  
Color Code: 278



Color: Chestnut Texture  
Color Code: 282



Color: Chive Sketch Print  
Color Code: 397



Color: Foxglove Dot Print  
Color Code: 669



Color: Black Texture  
Color Code: 018



Color: Black  
Color Code: 100

## Fernscape Wide Leg Pant

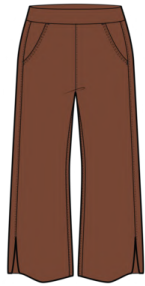
T1000013    CONTENT: 86% Organic Cotton, 14% Hemp    SIZES: XS-XL

WHOLESALE: US\$45.00    RETAIL: US\$90.00

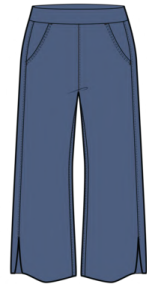
New

Fit: Wide leg crop fit, encased elastic waistband, mid rise, 25.5 inch inseam

Features: Slash pockets, back patch pocket, raw hem, side vent



Color: Dark Roast  
Color Code: 246



Color: Kyanite  
Color Code: 421

## Chaka Skirt

T1182127    CONTENT: 48% Organic Cotton in Conversion, 48% TENCEL™ Lyocell, 4% Elastane    SIZES: XS-XL

WHOLESALE: US\$34.00    RETAIL: US\$68.00

Fit: A-line silhouette, ruched elastic waistband, hits above the knee, 20 inch length

Features: Inherent odor control, hidden stash pocket in waistband on wearer's right



Color: True Navy Retro Print  
Color Code: 166



Color: Salt Ditsy Print  
Color Code: 185



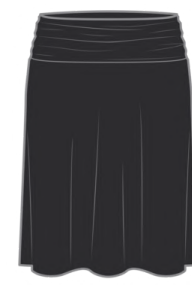
Color: Gourd Ikat Print  
Color Code: 194



Color: Midnight Star Geo  
Print  
Color Code: 278



Color: Campfire Lg Floral  
Print  
Color Code: 600



Color: Black  
Color Code: 100

## Freesia Wrap Skirt

T1000051    CONTENT: 48% Organic Cotton in Conversion, 48% TENCEL™ Lyocell, 4% Elastane    SIZES: XS-XL

**WHOLESALE:** US\$39.00    **RETAIL:** US\$78.00    New

**Fit:** Swing silhouette, faux wrap skirt with tie front, hits above the knee, 18 inch length

**Features:** Inherent odor control, on-seam hand pockets



Color: Black Pansy Print  
Color Code: 010



Color: Black  
Color Code: 100



Color: True Navy Retro Print  
Color Code: 166



Color: Foxglove Dot Print  
Color Code: 669

## Marigold Tiered Midi Skirt

T1841300    CONTENT: 48% Organic Cotton in Conversion, 48% TENCEL™ Lyocell, 4% Elastane    SIZES: XS-XL

**WHOLESALE:** US\$47.50    **RETAIL:** US\$95.00

**Fit:** Tiered silhouette, encased elastic waistband, midi length, 32.5 inch length

**Features:** Inherent odor control, on-seam hand pockets, ladder trim at bottom tier



Color: Black Pansy Print  
Color Code: 010



Color: True Navy Retro Print  
Color Code: 166



Color: Salt Ditsy Print  
Color Code: 185



Color: Campfire Lg Floral  
Print  
Color Code: 600

## Coaster Cord Skirt

T1000016    CONTENT: 69% Organic Cotton, 28% Polyester, 3% Elastane    SIZES: 0-18

**WHOLESALE:** US\$40.00    **RETAIL:** US\$80.00

New

**Fit:** Straight silhouette, 5 pocket styling, FlexForm waistband for comfort, hits above the knee, 16.5 inch length

**Features:** Shank button closure with zip fly, utility pocket



Color: Honey Brown  
Color Code: 201

Color: Epidote  
Color Code: 319

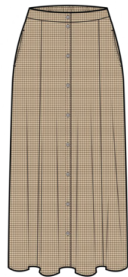
## Manzana Paneled Midi Skirt

T1441408    CONTENT: 100% Organic Cotton    SIZES: XS-XL

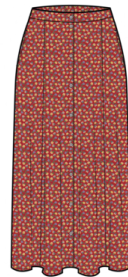
**WHOLESALE:** US\$45.00    **RETAIL:** US\$90.00

**Fit:** A-line silhouette, partial elastic waistband, gored skirt, midi length, 33.5 inch length

**Features:** Button front, on-seam hand pockets



Color: Partridge Gingham  
Color Code: 190



Color: Campfire Ditsy Print  
Color Code: 859



Color: Soot Graphic Print  
Color Code: 860

## Airscape Midi Skirt

T1000039    CONTENT: 100% Organic Cotton    SIZES: XS-XL

**WHOLESALE:** US\$47.50    **RETAIL:** US\$95.00    **New**

**Fit:** Tiered silhouette, partial elastic waistband, drop waist, midi length, 33.5 inch length

**Features:** On-seam hand pockets, cotton lace and pin tuck detail above hem



Color: Salt Dobby  
Color Code: 101



Color: Midnight Dobby  
Color Code: 954

## Merino Heartfelt Wrap Skirt

T1000040    CONTENT: 100% Merino Wool    SIZES: XS-XL

**WHOLESALE:** US\$60.00    **RETAIL:** US\$120.00    **New**

**Fit:** A-line silhouette, faux wrap skirt, encased elastic waistband, hits above the knee, 17 inch length

**Features:** Inherent odor control, jacquard or jersey stitch, fringe detail



Color: Port Plaid  
Color Code: 082



Color: Lupine Geo  
Color Code: 544



TOAD&CO 

# Women's Dresses

## Marley Tiered LS Dress

T1781310    CONTENT: 48% Organic Cotton in Conversion, 48% TENCEL™ Lyocell, 4% Elastane    SIZES: XS-XL

---

**WHOLESALE:** US\$49.00    **RETAIL:** US\$98.00

**Fit:** Swing silhouette, v-neck, bracelet length sleeves, tiered skirt, hits above the knee, 35.5 inch length

**Features:** Inherent odor control, on-seam hand pockets



Color: Black Pansy Print  
Color Code: 010



Color: Chive Sketch Print  
Color Code: 397

## Rosalinda Dress

T1771712    CONTENT: 48% Organic Cotton in Conversion, 48% TENCEL™ Lyocell, 4% Elastane    SIZES: XS-XL

---

**WHOLESALE:** US\$44.00    **RETAIL:** US\$88.00

**Fit:** A-line silhouette, v-neck, double layer bodice, hits above the knee, 37 inch length

**Features:** Inherent odor control, pleated detail, and hidden zipper secure stash pocket at wearer's right side seam



Color: Black Pansy Print  
Color Code: 010



Color: Black  
Color Code: 100



Color: True Navy Retro Print  
Color Code: 166



Color: Gourd Ikat Print  
Color Code: 194



Color: Port Moth Print  
Color Code: 670

## Freesia Wrap LS Dress

T1000007    CONTENT: 48% Organic Cotton in Conversion, 48% TENCEL™ Lyocell, 4% Elastane    SIZES: XS-XL

WHOLESALE: US\$49.00    RETAIL: US\$98.00

New

Fit: Wrap dress, fit and flare silhouette, v-neck, faux wrap skirt with tie front, hits above the knee, 35.5 inch length

Features: Inherent odor control, on-seam hand pockets



Color: Black  
Color Code: 100



Color: Salt Ditsy Print  
Color Code: 185



Color: Chive Sketch Print  
Color Code: 397



Color: Foxglove Dot Print  
Color Code: 669



Color: Port Moth Print  
Color Code: 670

## Rose Midi SS Dress

T1000018    CONTENT: 48% Organic Cotton in Conversion, 48% TENCEL™ Lyocell, 4% Elastane    SIZES: XS-XL

WHOLESALE: US\$49.00    RETAIL: US\$98.00

Fit: A-line silhouette, v-neck, double layer bodice, back waist tie, midi length, 48.5 inch length

Features: Inherent odor control, on-seam hand pockets



Color: Black Pansy Print  
Color Code: 010



Color: Black  
Color Code: 100



Color: True Navy Retro Print  
Color Code: 166



Color: Salt Ditsy Print  
Color Code: 185

## Foothill LS Dress

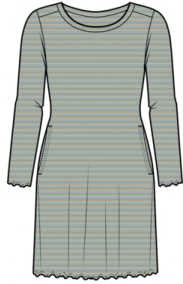
T1000015    CONTENT: 60% Recycled Cotton, 40% Recycled Polyester    SIZES: XS-XL

**WHOLESALE:** US\$45.00    **RETAIL:** US\$90.00

New

**Fit:** A-line silhouette, crew neck, hits above the knee, 34 inch length

**Features:** Rib collar, on-seam hand pockets, lettuce sleeve and body hem, UPF 50+



Color: Cloud Multi Stripe  
Color Code: 739



Color: Gourd  
Color Code: 819

## Bitterroot LS Dress

T1000024    CONTENT: 98% Recycled Polyester, 2% Elastane    SIZES: XS-XL

**WHOLESALE:** US\$55.00    **RETAIL:** US\$110.00

New

**Fit:** Shift silhouette, raglan sleeve, shirt tail, hits above the knee, 36 inch length

**Features:** Button henley placket, on-seam hand pockets, rib cuff



Color: Olive  
Color Code: 334



Color: Foxglove  
Color Code: 560

## Fernscape LS Hooded Dress

T1000049    CONTENT: 86% Organic Cotton, 14% Hemp    SIZES: XS-XL

---

**WHOLESALE:** US\$55.00    **RETAIL:** US\$110.00    New

**Fit:** Shift silhouette, 3 piece hood, raglan sleeve, hits above the knee, 34.5 inch length

**Features:** Woven henley placket and hood binding, on-seam hand pockets, rib cuff



Color: Dark Roast  
Color Code: 246



Color: Kyanite  
Color Code: 421

## Campo Fleece 1/4 Snap Dress

T1781301    CONTENT: 100% Recycled Polyester    SIZES: XS-XL

---

**WHOLESALE:** US\$80.00    **RETAIL:** US\$160.00

**Fit:** Shift silhouette, raglan sleeve with elasticated binding at cuff, hits above the knee, 34.5 inch length

**Features:** Stand collar, contrast woven snap placket, internal kangaroo pocket



Color: Kyanite Floral Print  
Color Code: 792

## Alpineglo Sweater Dress

T1000044    CONTENT: 50% Merino Wool, 50% Organic Cotton    SIZES: XS-XL

**WHOLESALE:** US\$85.00    **RETAIL:** US\$170.00    **New**

**Fit:** Relaxed fit, roll neck, raglan sleeve, hits above the knee, 33 inch length

**Features:** Knitted with wool yarn on the exterior and cotton yarn on the interior, jersey stitch, drop-in hand pockets, rolled cuffs and hem



Color: Olive  
Color Code: 334



Color: True Navy  
Color Code: 414

## Manzana Shift SS Dress

T1000029    CONTENT: 100% Organic Cotton    SIZES: XS-XL

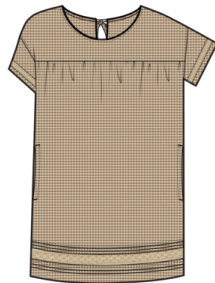
**WHOLESALE:** US\$47.50    **RETAIL:** US\$95.00    **New**

**Fit:** Shift silhouette, open crew neck, drop shoulder, hits above the knee, 34.5 inch length

**Features:** Lace trim and pintuck detail at bottom of sleeve and hem, keyhole opening with self-fabric tie at back neck, on-seam hand pockets



Color: Pasture Floral Print  
Color Code: 169



Color: Partridge Gingham  
Color Code: 190

## Re-Form Popover LS Dress

T1781409    CONTENT: 60% Recycled Cotton, 40% Recycled Polyester    SIZES: XS-XL

**WHOLESALE:** US\$49.00    **RETAIL:** US\$98.00

**Fit:** Shift silhouette, shirt tail, hits above the knee, 36 inch length

**Features:** Single button-through chest pocket, on-seam hand pockets, adjustable cuffs



Color: Chestnut Check  
Color Code: 695



Color: Atlantic Ombre  
Color Code: 868



Color: Ink Ombre  
Color Code: 869

## Cascadia Popover LS Dress

T1000050    CONTENT: 55% Hemp, 45% Organic Cotton    SIZES: XS-XL

**WHOLESALE:** US\$62.50    **RETAIL:** US\$125.00

New

**Fit:** Shift silhouette, shirt tail, hits above the knee, 36 inch length

**Features:** Single button-through chest pocket, on-seam hand pockets, adjustable cuffs



Color: Honey Brown  
Color Code: 201



Color: Midnight Geo Print  
Color Code: 444

## Manzana Square Neck LS Dress

T1000008    CONTENT: 100% Organic Cotton    SIZES: XS-XL

**WHOLESALE:** US\$65.00    **RETAIL:** US\$130.00    **New**

**Fit:** A-line silhouette with self tie at waist, square neck, raglan sleeve, gored skirt, midi length, 48.5 inch length

**Features:** Button front, lace trim and pintuck detail at neckline and sleeve, on-seam hand pockets, encased elastic cuffs



Color: Partridge Gingham  
Color Code: 190



Color: Soot Graphic Print  
Color Code: 860

## Tarn SL Jumpsuit

T1000041    CONTENT: 54% Hemp, 44% TENCEL™ Lyocell, 2% Elastane    SIZES: XS-XL

**WHOLESALE:** US\$65.00    **RETAIL:** US\$130.00    **New**

**Fit:** Relaxed fit, scoop neck, bra friendly straps, encased elastic waistband with belt, ankle length, 11 inch bottom opening, 27.5 inch inseam

**Features:** Button front, front and back patch pockets



Color: Navy Railroad Stripe  
Color Code: 947



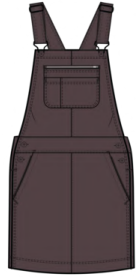
# Cascadia Jumper

T1000048    CONTENT: 55% Hemp, 45% Organic Cotton    SIZES: XS-XL

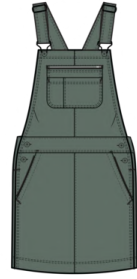
**WHOLESALE:** US\$62.50    **RETAIL:** US\$125.00    **New**

**Fit:** A-line silhouette, adjustable straps, hits above the knee, 17 inch skirt length

**Features:** Zipper chest patch pocket, slash pockets, back patch pockets



Color: Raisin  
Color Code: 506



Color: Laurel  
Color Code: 728

TOAD&CO 

**Women's Tops  
and Layers**

## Manzana Peasant LS Shirt

T1000011    CONTENT: 100% Organic Cotton    SIZES: XS-XL

WHOLESALE: US\$45.00    RETAIL: US\$90.00

New

Fit: Boxy fit, square neck, raglan sleeve, 24.5 inch length

Features: Button front, lace trim and pintuck detail at neckline and sleeve, button closure cuff



Color: Egret  
Color Code: 020



Color: Partridge Gingham  
Color Code: 190



Color: Pasture  
Color Code: 327



Color: Soot Graphic Print  
Color Code: 860

## W's Airscape LS Shirt

T1000035    CONTENT: 100% Organic Cotton    SIZES: XS-XL

WHOLESALE: US\$44.00    RETAIL: US\$88.00

New

Fit: Oversized fit, shirt tail, 26.5 inch length

Features: Drop-in chest pocket, adjustable cuffs



Color: North Shore Check  
Color Code: 087



Color: Salt Dobby  
Color Code: 101



Color: Salt Vertical Stripe  
Color Code: 182

## Re-Form Flannel Boxy LS Shirt

T1241411    CONTENT: 60% Recycled Cotton, 40% Recycled Polyester    SIZES: XS-XL

**WHOLESALE:** US\$42.50    **RETAIL:** US\$85.00

**Fit:** Boxy fit, peter pan collar, drop tail, 23.5 inch length

**Features:** Drop-in chest pocket, adjustable cuffs



Color: Pasture Mini Check  
Color Code: 174



Color: Aster Madras  
Color Code: 177



Color: Port Open  
Windowpane  
Color Code: 750



Color: Kyanite Tonal Madras  
Color Code: 865



Color: Ink Ombre  
Color Code: 869



Color: Black Tulip Dobby  
Color Code: 871

## W's Arroyo Twill Boxy LS Shirt

T1241409    CONTENT: 100% Organic Cotton    SIZES: XS-XL

**WHOLESALE:** US\$45.00    **RETAIL:** US\$90.00

**Fit:** Boxy fit, peter pan collar, drop tail, 23.5 inch length

**Features:** Drop-in chest pocket, adjustable cuffs, UPF 75+



Color: Dusty Cedar  
Bandana Print  
Color Code: 191



Color: Skyway  
Color Code: 440



Color: Yucca  
Color Code: 375

## Re-Form Flannel LS Shirt

T1241913    CONTENT: 60% Recycled Cotton, 40% Recycled Polyester    SIZES: XS-XL

**WHOLESALE:** US\$42.50    **RETAIL:** US\$85.00

**Fit:** Standard fit, drop tail, 27 inch length

**Features:** Two button-through chest pockets with flaps, adjustable cuffs



Color: Chestnut Dobby  
Color Code: 175



Color: Glacier Lg  
Windowpane  
Color Code: 176



Color: Chestnut Check  
Color Code: 695



Color: Campfire  
Windowpane  
Color Code: 866



Color: Yucca Madras  
Color Code: 867



Color: Atlantic Ombre  
Color Code: 868

## W's Cascadia LS Shirt

T1000053    CONTENT: 55% Hemp, 45% Organic Cotton    SIZES: XS-XL

**WHOLESALE:** US\$49.00    **RETAIL:** US\$98.00

New

**Fit:** Relaxed fit, drop tail, 26 inch length

**Features:** Drop-in chest pocket, adjustable cuffs



Color: Barley Floral Print  
Color Code: 158



Color: Honey Brown  
Color Code: 201



Color: Cloud  
Color Code: 561

## Folk Yeah Shirt Jacket

T1241013    CONTENT: 62% Recycled Polyester, 38% Recycled Wool    SIZES: XS-XL

---

**WHOLESALE:** US\$65.00    **RETAIL:** US\$130.00

**Fit:** Shirt jacket fit, drop tail, 27 inch length

**Features:** Inherent odor control, snap placket, two drop-in chest pockets with snap closure, on-seam hand pockets, adjustable cuffs



Color: Kelp  
Color Code: 238



Color: Dark Roast  
Color Code: 246



Color: Salamander  
Color Code: 839

## W's Conifer Western LS Shirt

T1241403    CONTENT: 80% Recycled Cotton, 20% Recycled Polyester    SIZES: XS-XL

---

**WHOLESALE:** US\$60.00    **RETAIL:** US\$120.00

**Fit:** Standard fit, shirt tail, 23 inch length

**Features:** Western front and back yoke details, placed embroidery at front yoke, back yoke, and elbow, snap placket, two chest pockets with snap flap closure, adjustable cuffs



Color: Chestnut Embroidery  
Color Code: 876

## W's Conifer Shirt Jacket

T1241305    CONTENT: 80% Recycled Cotton, 20% Recycled Polyester    SIZES: XS-XL

**WHOLESALE:** US\$72.50    **RETAIL:** US\$145.00

**Fit:** Shirt jacket fit, drop shoulder, drop tail, 29 inch length

**Features:** Snap placket, two chest pockets with hidden snap flap closure, on-seam hand pockets, adjustable cuffs, jersey knit lining



Color: Chai  
Color Code: 215

Color: Dusty Cedar  
Color Code: 665

## W's Boundless Jersey SS Crew

T1002401    CONTENT: 55% Organic Cotton, 45% Recycled Polyester    SIZES: XS-XL

**WHOLESALE:** US\$27.50    **RETAIL:** US\$55.00

**Fit:** Boxy fit, crew neck, drop shoulder, 22 inch length

**Features:** UPF 50+, rib neck trim



Color: Campfire Stripe  
Color Code: 195

Color: Cloud  
Color Code: 561

Color: Laurel  
Color Code: 728

Color: Coyote Floral Print  
Color Code: 872

Color: Kyanite Stripe  
Color Code: 963

## W's Boundless Jersey LS Tee

T1241402    CONTENT: 55% Organic Cotton, 45% Recycled Polyester    SIZES: XS-XL

**WHOLESALE:** US\$29.00    **RETAIL:** US\$58.00

**Fit:** Boxy fit, crew neck, drop shoulder, 22 inch length

**Features:** UPF 50+, rib neck and cuffs, shark's tooth at center front neck



Color: Campfire Stripe  
Color Code: 195



Color: Flamingo  
Color Code: 664



Color: Laurel  
Color Code: 728



Color: Coyote Floral Print  
Color Code: 872



Color: Kyanite Stripe  
Color Code: 963

## W's Primo SS Crew

T1001900    CONTENT: 100% Organic Cotton in Conversion    SIZES: XS-XL

**WHOLESALE:** US\$22.50    **RETAIL:** US\$45.00

**Fit:** Basic tee fit, crew neck, 24.5 inch length

**Features:** Drop-in chest pocket



Color: Rain  
Color Code: 557



Color: Sundown  
Color Code: 624



Color: Artichoke  
Color Code: 797



## W's Primo SS Crew Embroidered

T1001915    CONTENT: 100% Organic Cotton in Conversion    SIZES: XS-XL

---

**WHOLESALE:** US\$24.00    **RETAIL:** US\$48.00

**Fit:** Basic tee fit, crew neck, 24.5 inch length

**Features:** Drop-in chest pocket



Color: Salt Sunflower  
Embroidery  
Color Code: 184

Color: Brown Sugar  
Embroidery  
Color Code: 873

## W's Primo LS Crew

T1241904    CONTENT: 100% Organic Cotton in Conversion    SIZES: XS-XL

---

**WHOLESALE:** US\$25.00    **RETAIL:** US\$50.00

**Fit:** Basic tee fit, crew neck, 25 inch length

**Features:** Side vents



Color: Jasper  
Color Code: 380

Color: Rain  
Color Code: 557

Color: Sundown  
Color Code: 624

Color: Artichoke  
Color Code: 797

Color: Gourd  
Color Code: 819

## W's Primo LS Crew Embroidered

T1000054    CONTENT: 100% Organic Cotton in Conversion    SIZES: XS-XL

**WHOLESALE:** US\$27.50    **RETAIL:** US\$55.00

New

**Fit:** Basic tee fit, crew neck, 25 inch length

**Features:** Side vents



Color: Salt Sunflower  
Embroidery  
Color Code: 184



Color: Brown Sugar  
Embroidery  
Color Code: 873

## W's Primo LS Peasant Top

T1000004    CONTENT: 100% Organic Cotton in Conversion    SIZES: XS-XL

**WHOLESALE:** US\$40.00    **RETAIL:** US\$80.00

New

**Fit:** Boxy fit, scoop neck with keyhole and tie, encased elastic cuff, 23 inch length

**Features:** Shirring along neckline with picot trim, lace trim detail on sleeves



Color: Salt Sunflower  
Embroidery  
Color Code: 184



Color: Deep Sea  
Color Code: 562



Color: Gourd  
Color Code: 819

# Marley SS V Tee

T1002013    CONTENT: 59% Organic Cotton in Conversion, 38% TENCEL™ Lyocell, 3% Elastane    SIZES: XS-XL

**WHOLESALE:** US\$27.50    **RETAIL:** US\$55.00

**Fit:** Basic tee fit, v-neck, 24.5 inch length

**Features:** Inherent odor control



Color: Light Heather Grey  
Color Code: 075



Color: Big Sky  
Color Code: 485



Color: Laurel  
Color Code: 728



Color: True Black  
Color Code: 009



Color: Iron  
Color Code: 039



Color: True White  
Color Code: 103



Color: Skyway  
Color Code: 440



Color: Huckleberry  
Color Code: 523



Color: Burnt Ochre  
Color Code: 850

# Marley LS V Tee

T1241033    CONTENT: 59% Organic Cotton in Conversion, 38% TENCEL™ Lyocell, 3% Elastane    SIZES: XS-XL

**WHOLESALE:** US\$29.00    **RETAIL:** US\$58.00

**Fit:** Basic tee fit, v-neck, 24.5 inch length

**Features:** Inherent odor control



Color: True Black  
Color Code: 009



Color: Iron  
Color Code: 039



Color: Light Heather Grey  
Color Code: 075



Color: True White  
Color Code: 103



Color: Skyway  
Color Code: 440



Color: Big Sky  
Color Code: 485



Color: Huckleberry  
Color Code: 523



Color: Dusty Cedar  
Color Code: 665



Color: Laurel  
Color Code: 728



Color: Burnt Ochre  
Color Code: 850

## Rose LS Tee

T1241034    CONTENT: 58% Organic Cotton, 39% TENCEL™ Lyocell, 3% Elastane    SIZES: XS-XL

**WHOLESALE:** US\$27.50    **RETAIL:** US\$55.00

**Fit:** Basic tee fit, v-neck, 24 inch length

**Features:** Inherent odor control, ruching detail at bust, side vents



Color: Egret  
Color Code: 020



Color: Aster Micro Stripe  
Color Code: 080



Color: Oatmeal Micro Stripe  
Color Code: 193



Color: Atlantic  
Color Code: 411



Color: Cinnabar  
Color Code: 609

## Maisey LS T-Neck

T1241906    CONTENT: 58% Organic Cotton, 39% TENCEL™ Lyocell, 3% Elastane    SIZES: XS-XL

**WHOLESALE:** US\$30.00    **RETAIL:** US\$60.00

**Fit:** Basic tee fit, turtle neck, drop tail, 24 inch length

**Features:** Inherent odor control, side vents



Color: Barley Multi Stripe  
Color Code: 167



Color: Oatmeal Micro Stripe  
Color Code: 193



Color: Burnt Henna Multi  
Stripe  
Color Code: 968

## Foothill Pointelle LS T-Neck

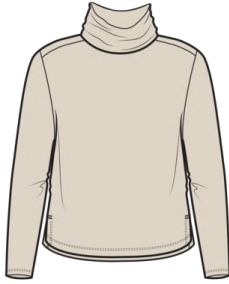
T1241410    CONTENT: 55% Organic Cotton, 45% Recycled Polyester    SIZES: XS-XL

---

**WHOLESALE:** US\$30.00    **RETAIL:** US\$60.00

**Fit:** Basic tee fit, turtle neck, drop tail, 24 inch length

**Features:** Side vents



Color: Salt  
Color Code: 199



Color: Midnight  
Color Code: 453

## Foothill Pointelle SS Baby Tee

T1002405    CONTENT: 55% Organic Cotton, 45% Recycled Polyester    SIZES: XS-XL

---

**WHOLESALE:** US\$22.50    **RETAIL:** US\$45.00

**Fit:** Baby tee fit, crew neck, 21.5" length

**Features:** Rib neck trim, lettuce sleeve and hem



Color: Port Ditsy Print  
Color Code: 180



Color: Salt  
Color Code: 199



Color: Midnight  
Color Code: 453

## Foothill Pointelle LS Crew II

T1241408    CONTENT: 55% Organic Cotton, 45% Recycled Polyester    SIZES: XS-XL

**WHOLESALE:** US\$32.50    **RETAIL:** US\$65.00

**Fit:** Basic tee fit, crew neck, 21.5 inch length

**Features:** Rib collar and cuffs, lettuce hem



Color: Port Ditsy Print  
Color Code: 180



Color: Salt  
Color Code: 199



Color: Midnight  
Color Code: 453



Color: Kelp Stripe  
Color Code: 764

## Foothill LS Crew II

T1241407    CONTENT: 60% Recycled Cotton, 40% Recycled Polyester    SIZES: XS-XL

**WHOLESALE:** US\$32.50    **RETAIL:** US\$65.00

**Fit:** Basic tee fit, crew neck, 21.5 inch length

**Features:** Rib collar and cuffs, shark's tooth at center front neck, lettuce hem, UPF 50+



Color: Heather Grey Stripe  
Color Code: 065



Color: Aster Floral Print  
Color Code: 181



Color: Salt Tulip Print  
Color Code: 183



Color: Cloud Multi Stripe  
Color Code: 739



Color: Gourd  
Color Code: 819

## W's Nord Reversible LS Henley

T1241404    CONTENT: 60% Organic Cotton, 40% Recycled Polyester    SIZES: XS-XL

---

**WHOLESALE:** US\$37.50    **RETAIL:** US\$75.00

**Fit:** Boxy fit, henley, drop shoulder, 22.5 inch length

**Features:** Reversible, rib collar and cuffs, ring snap, woven henley placket



Color: Salt  
Color Code: 199

Color: Yucca  
Color Code: 375

## W's Bitterroot LS Pullover

T1241414    CONTENT: 98% Recycled Polyester, 2% Elastane    SIZES: XS-XL

---

**WHOLESALE:** US\$45.00    **RETAIL:** US\$90.00

**Fit:** Standard fit, crew neck, raglan sleeve, 22.5 inch length

**Features:** Rib neck, cuffs, and hem, shark's tooth at center front neck



Color: Olive  
Color Code: 334

Color: Midnight  
Color Code: 453

Color: Foxglove  
Color Code: 560



## W's Bitterroot LS Hoodie

T1000020    CONTENT: 98% Recycled Polyester, 2% Elastane    SIZES: XS-XL

**WHOLESALE:** US\$55.00    **RETAIL:** US\$110.00    **New**

**Fit:** Relaxed fit, 3 piece hood with drawcord, raglan sleeve, 22 inch length

**Features:** Patch pockets, rib cuffs and hem



Color: Soot  
Color Code: 089



Color: Olive  
Color Code: 334



Color: Raisin  
Color Code: 506

## Fernscape Roll Neck Pullover

T1000038    CONTENT: 86% Organic Cotton, 14% Hemp    SIZES: XS-XL

**WHOLESALE:** US\$45.00    **RETAIL:** US\$90.00    **New**

**Fit:** Boxy fit, roll neck, drop shoulder, 22 inch length

**Features:** Rolled neck, cuffs, and hem



Color: Dark Roast  
Color Code: 246



Color: Treetop  
Color Code: 314



Color: Kyanite  
Color Code: 421

## W's Campo Fleece Jacket

T1081304    CONTENT: 100% Recycled Polyester    SIZES: XS-XL

**WHOLESALE:** US\$75.00    **RETAIL:** US\$150.00

**Fit:** Boxy fit, stand collar, drop shoulder, elasticated binding at sleeve cuff and bottom opening, 23 inch length

**Features:** Contrast woven secure zip chest pocket, single welt fleece-lined hand pockets



Color: Artichoke Pinecone Print  
Color Code: 196



Color: Kyanite Floral Print  
Color Code: 792

## W's Kennicott Car Coat

T1000030    CONTENT: 33% Recycled Polyester, 29% Recycled Wool, 18% Recycled Cotton, 10% Recycled Nylon, 7% Polyester, 3% Recycled Other Fibers

SIZES: XS-XL

**WHOLESALE:** US\$90.00    **RETAIL:** US\$180.00

New

**Fit:** Oversized fit, drop shoulder, 27 inch length

**Features:** Peter pan collar, wooden toggle closure, patch pockets



Color: Black Plaid  
Color Code: 012



Color: Honey Brown  
Color Code: 201



Color: Falcon Brown Flowers  
Color Code: 877

## W's Kennicott 1/4 Zip

T1000055    CONTENT: 33% Recycled Polyester, 29% Recycled Wool, 18% Recycled Cotton, 10% Recycled Nylon, 7% Polyester, 3% Recycled Other Fibers

SIZES: XS-XL

**WHOLESALE:** US\$75.00    **RETAIL:** US\$150.00

New

**Fit:** Boxy fit, stand collar, 1/4 zip, raglan sleeve, 21.5 inch length

**Features:** Welt hand pockets



Color: Black Plaid  
Color Code: 012



Color: Falcon Brown  
Flowers  
Color Code: 877



Color: Cabin  
Color Code: 981

## W's Sespe Sherpa Vest

T1081102    CONTENT: 47% Recycled Polyester, 45% Recycled Wool, 5% Recycled Nylon, 3% Recycled Other Fibers

SIZES: XS-XL

**WHOLESALE:** US\$57.50    **RETAIL:** US\$115.00

**Fit:** Standard fit, stand collar, drop tail, 22 inch length

**Features:** Inherent odor control, secure zip hand pockets, contrast woven trim



Color: Barley Ladybugs  
Color Code: 179



Color: Ink Plaid  
Color Code: 740

# W's Sespe Jacket

T1081302    CONTENT: 47% Recycled Polyester, 45% Recycled Wool, 5% Recycled Nylon, 3% Recycled Other Fibers    SIZES: XS-XL

---

**WHOLESALE:** US\$77.50    **RETAIL:** US\$155.00

**Fit:** Boxy fit, drop shoulder, drop tail, 22 inch length

**Features:** Inherent odor control, patch pockets, contrast woven trim



Color: Barley Ladybugs  
Color Code: 179



Color: Ink Plaid  
Color Code: 740

TOAD&CO 

# Women's Sweaters

## Bianca Tie Tank

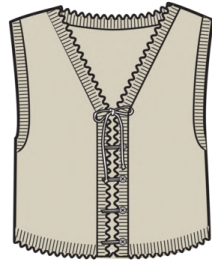
T1000009    CONTENT: 70% Organic Cotton, 30% Recycled Cotton    SIZES: XS-XL

WHOLESALE: US\$44.00    RETAIL: US\$88.00

New

Fit: Straight fit, v-neck, 19.5 inch length

Features: Jersey and pointelle stitch, button front with tie, picot trimmed neckline and hem



Color: Almond  
Color Code: 252



Color: Palm Stripe  
Color Code: 745

## Bianca Shaker Crew Sweater

T1000021    CONTENT: 70% Organic Cotton, 30% Recycled Cotton    SIZES: XS-XL

WHOLESALE: US\$60.00    RETAIL: US\$98.00

New

Fit: Relaxed fit, crew neck, drop shoulder, 21 inch length

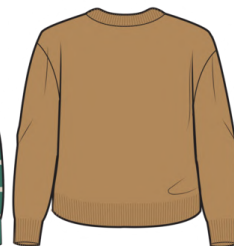
Features: Shaker stitch, rib neck, cuffs, and hem



Color: True Navy  
Color Code: 414



Color: Palm Stripe  
Color Code: 745



Color: Camel  
Color Code: 781

## Bianca Pattern Crew Sweater

T1001101    CONTENT: 70% Organic Cotton, 30% Recycled Cotton    SIZES: XS-XL

---

**WHOLESALE:** US\$55.00    **RETAIL:** US\$110.00

New

**Fit:** Relaxed fit, crew neck, drop shoulder, 21 inch length

**Features:** Shaker stitch, rib neck, cuffs, and hem



Color: Almond Floral Print  
Color Code: 186

## Bianca Shaker Cardigan

T1000027    CONTENT: 70% Organic Cotton, 30% Recycled Cotton    SIZES: XS-XL

---

**WHOLESALE:** US\$65.00    **RETAIL:** US\$130.00

New

**Fit:** Relaxed fit, v-neck, 23 inch length

**Features:** Shaker stitch, button front, two patch pockets, rib cuffs and hem



Color: Palm Stripe  
Color Code: 745



Color: Camel  
Color Code: 781

## Bianca Pattern Cardigan

T1001105    CONTENT: 70% Organic Cotton, 30% Recycled Cotton    SIZES: XS-XL

---

**WHOLESALE:** US\$70.00    **RETAIL:** US\$140.00

New

**Fit:** Relaxed fit, v-neck, 23 inch length

**Features:** Shaker stitch, button front, rib cuffs and hem



Color: Almond Floral Print  
Color Code: 186

## Twigtree Crew Sweater

T1000059    CONTENT: 100% Organic Cotton    SIZES: XS-XL

---

**WHOLESALE:** US\$62.50    **RETAIL:** US\$125.00

New

**Fit:** Boxy fit, crew neck, drop shoulder, 21 inch length

**Features:** Seed stitch, rib neck, cuffs, and hem



Color: Natural  
Color Code: 016



Color: Dark Roast  
Color Code: 246



Color: Flamingo  
Color Code: 664



## Moss Point Pullover Sweater

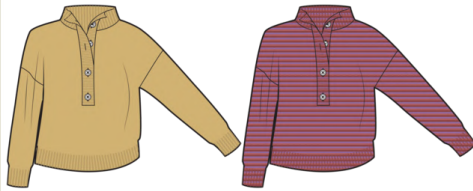
T1000061    CONTENT: 60% Recycled Cotton, 40% Recycled Polyester    SIZES: XS-XL

**WHOLESALE:** US\$75.00    **RETAIL:** US\$150.00

New

**Fit:** Boxy fit, stand collar, drop shoulder, 22 inch length

**Features:** Shaker stitch, henley, rib collar, cuffs, and hem



Color: Rattan  
Color Code: 723

Color: Sundown Stripe  
Color Code: 880

## Moss Point Hoodie

T1000026    CONTENT: 60% Recycled Cotton, 40% Recycled Polyester    SIZES: XS-XL

**WHOLESALE:** US\$80.00    **RETAIL:** US\$160.00

New

**Fit:** Standard fit, hood, fly away opening, hits mid thigh

**Features:** Shaker stitch, single welt hand pockets



Color: Salt  
Color Code: 199



Color: True Navy  
Color Code: 414

## W's Alpinello Sweater

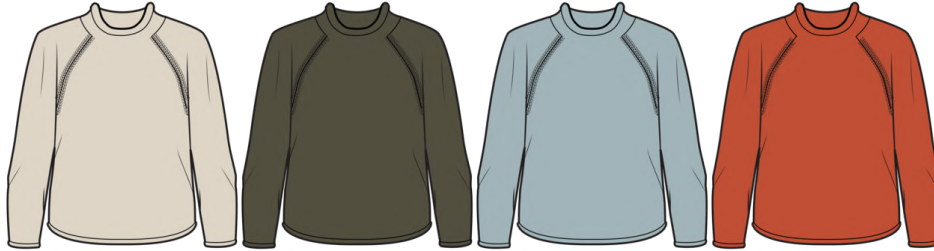
T1000001    CONTENT: 50% Merino Wool, 50% Organic Cotton    SIZES: XS-XL

**WHOLESALE:** US\$72.50    **RETAIL:** US\$145.00

New

**Fit:** Relaxed fit, roll neck, raglan sleeve, 22 inch length

**Features:** Knitted with wool yarn on the exterior and cotton yarn on the interior, jersey stitch, rolled cuffs and hem



Color: Salt  
Color Code: 199

Color: Olive  
Color Code: 334

Color: Cloud  
Color Code: 561

Color: Burnt Ochre  
Color Code: 850

## W's Alpinello Cardigan

T1000002    CONTENT: 50% Merino Wool, 50% Organic Cotton    SIZES: XS-XL

**WHOLESALE:** US\$85.00    **RETAIL:** US\$170.00

New

**Fit:** Relaxed fit, drop shoulder, 21 inch length

**Features:** Knitted with wool yarn on the exterior and cotton yarn on the interior, jersey stitch with cable detail on body and sleeve, rib collar and cuffs, button front, welt hand pockets



Color: Salt  
Color Code: 199

Color: Burnt Ochre  
Color Code: 850

## W's Wasatch Sweater Vest

T1000025    CONTENT: 37% Wool Non-Mulesed, 36% Organic Cotton, 26% Recycled Nylon, 1% Elastane    SIZES: XS-XL

**WHOLESALE:** US\$55.00    **RETAIL:** US\$110.00

New

**Fit:** Standard fit, v-neck, 20 inch length

**Features:** Jersey stitch, rib neck, arm opening, and hem



Color: Chestnut Chest  
Stripe  
Color Code: 105



Color: Sundown  
Color Code: 624

## W's Wasatch Crew Sweater

T1000005    CONTENT: 37% Wool Non-Mulesed, 36% Organic Cotton, 26% Recycled Nylon, 1% Elastane    SIZES: XS-XL

**WHOLESALE:** US\$75.00    **RETAIL:** US\$150.00

New

**Fit:** Relaxed fit, crew neck, drop shoulder, 22.5 inch length

**Features:** Jersey, intarsia or fairisle stitch, rib neck, cuffs, and hem



Color: Chestnut Chest  
Stripe  
Color Code: 105



Color: Ink  
Color Code: 394



Color: Sundown  
Color Code: 624

## Cotati Dolman Sweater

T1241101    CONTENT: 75% Wool Non-Mulesed, 25% Nylon    SIZES: XS-XL

**WHOLESALE:** US\$74.00    **RETAIL:** US\$148.00

**Fit:** Boxy fit, crew neck, dolman sleeves, 22.5 inch length

**Features:** Inherent odor control, rib jacquard stitch, rib collar, cuffs, and hem, side vents



Color: Barley Moths  
Color Code: 187



Color: Chestnut Daisies  
Color Code: 749

## Toddy Pullover Sweater

T1000017    CONTENT: 47% Nylon, 35% Wool Non-Mulesed, 15% Alpaca, 3% Elastane    SIZES: XS-XL

**WHOLESALE:** US\$77.50    **RETAIL:** US\$155.00

New

**Fit:** Relaxed fit, v-neck, drop shoulder, 22 inch length

**Features:** Jersey or jacquard stitch, rib neck, cuffs, and hem



Color: Heather Grey  
Color Code: 111



Color: Barley  
Color Code: 257



Color: Coyote  
Color Code: 811



Color: Canoe  
Color Code: 942

## Toddy T-Neck Sweater

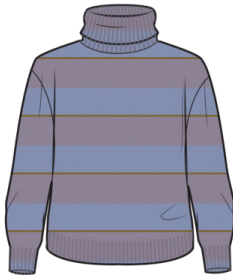
T1001304    CONTENT: 47% Nylon, 35% Wool Non-Mulesed, 15% Alpaca, 3% Elastane    SIZES: XS-XL

---

**WHOLESALE:** US\$80.00    **RETAIL:** US\$160.00

**Fit:** Boxy fit, turtle neck, drop shoulder, 22.5 inch length

**Features:** Inherent odor and temperature control, jersey stitch, and rib collar, cuffs, and hem



Color: Aster  
Color Code: 534



Color: Gourd  
Color Code: 819



Color: Cabin  
Color Code: 981

## Toddy Cardigan

T1071402    CONTENT: 47% Nylon, 35% Wool Non-Mulesed, 15% Alpaca, 3% Elastane    SIZES: XS-XL

---

**WHOLESALE:** US\$87.50    **RETAIL:** US\$175.00

**Fit:** Boxy fit, v-neck, drop shoulder, 21.5 inch length

**Features:** Inherent odor control, jersey, button front, rib placket, cuffs, and hem, patch pockets



Color: Ivy  
Color Code: 346



Color: Aster  
Color Code: 534

## Toddy Duster Cardigan

T1000043    CONTENT: 47% Nylon, 35% Wool Non-Mulesed, 15% Alpaca, 3% Elastane    SIZES: XS-XL

WHOLESALE: US\$100.00    RETAIL: US\$200.00

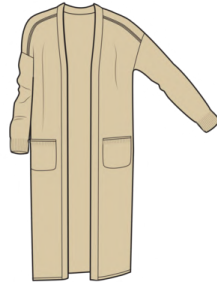
New

Fit: Standard fit, drop shoulder, hits below the knee, 42.5 inch length

Features: Jersey stitch, open front, patch pockets, rib cuffs



Color: Heather Grey  
Color Code: 111



Color: Barley  
Color Code: 257

## Merino Heartfelt Hoodie

T1071409    CONTENT: 100% Merino Wool    SIZES: XS-XL

WHOLESALE: US\$110.00    RETAIL: US\$220.00

Fit: Standard fit, hood, fly away opening, hits mid thigh, 32.5 inch length

Features: Inherent odor control, jacquard or jersey stitch, single welt hand pockets



Color: Midnight Landscape  
Color Code: 092



Color: Lupine Geo  
Color Code: 544



Color: Dusty Cedar Stripe  
Color Code: 667



Color: London Fog Fair Isle  
Color Code: 773



Color: Pasture Cattail  
Color Code: 780



Color: Coyote Ombre  
Color Code: 798



Color: Chestnut Flowers  
Color Code: 858